

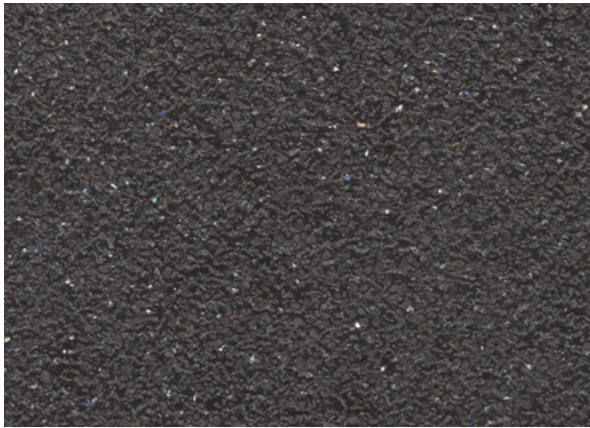
Green Quartz 4201
NCS S 5005-G50Y

w/r 4350
LRV 24



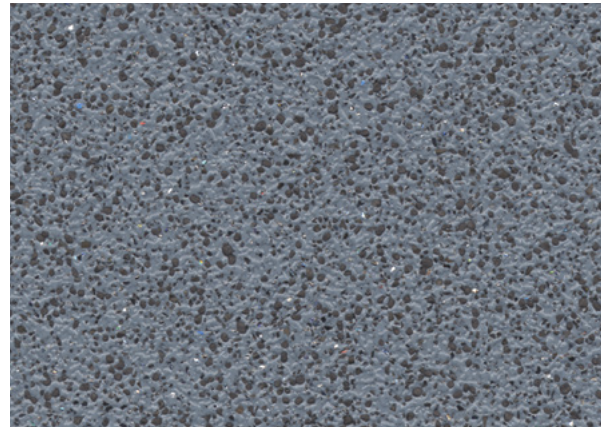
Chromite 4202
NCS S 6500-N

w/r 4610
LRV 15



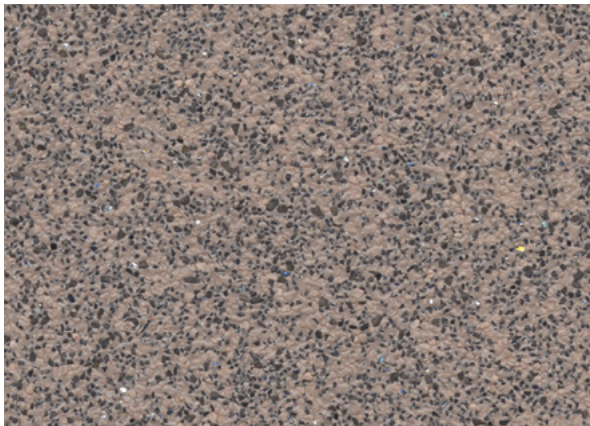
Biotite 4203
NCS S 8000-N

w/r 8640
LRV 6



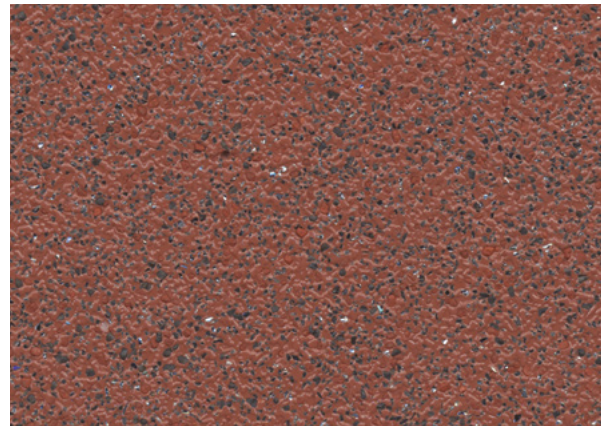
Breccia 4204
NCS S 5010-R90B

w/r 4670
LRV 18



Siltstone 4205
NCS S 5005-Y80R

w/r 4600
LRV 23



Red Ochre 4206
NCS S 5030-Y80R

w/r 4206
LRV 13

Heavy-duty safety flooring with enhanced slip resistance for commercial kitchens and food processing areas

w/r = weld rod NCS = Natural Colour System LRV = Light Reflectance Value



Refer to BRE Global ratings on
www.greenbooklive.com

