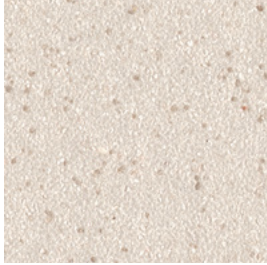


BAREFOOT & SHOD, WET & DRY.

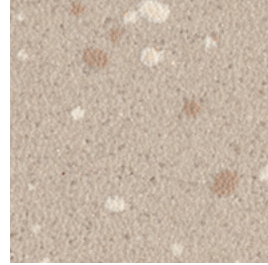
SAFETY FLOORING



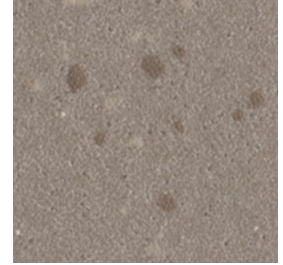
Chalk Dune **5766** ▲ w/r 5766  
NCS S 1502-Y50R LRV 60



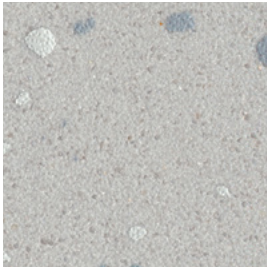
Lunar Shell **5772** ▲ w/r 5772  
NCS S 1502-Y LRV 64



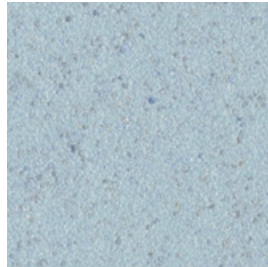
Barley Cove **5761** ▲ w/r 5212  
NCS S 3005-Y50R LRV 47



Truffle Shore **5762** ▲ w/r 5762  
NCS S 5005-Y50R LRV 24



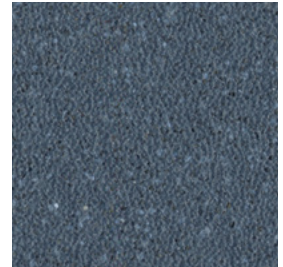
Sea Spray **5763** ▲ w/r 5202  
NCS S 3000-N LRV 49



Sea Mist **5768** w/r 5205  
NCS S 2010-B LRV 46



Calm Azure **5770** w/r 5206  
NCS S 2030-R90B LRV 31



Deep Lagoon **5771** w/r 5207  
NCS S 6010-R90B LRV 12

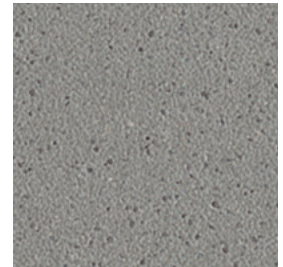


HSE Compliant  
**50+**  
Pendulum Wet Test

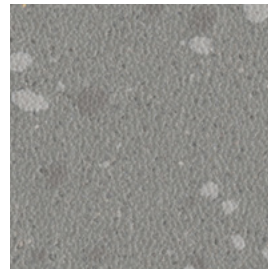
**Sustainable Slip Resistance**  
throughout product's guaranteed life



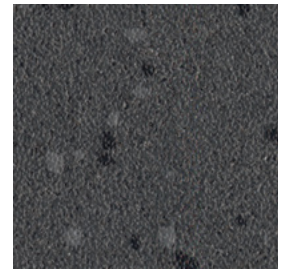
Cool Pebble **5767** w/r 2090  
NCS S 3000-N LRV 46



Slate Haze **5773** w/r 5764  
NCS S 5000-N LRV 26



Coastal Flint **5764** ▲ w/r 5764  
NCS S 4500-N LRV 26



Granite Sky **5765** ▲ w/r 4490  
NCS S 7502-B LRV 10

w/r = weld rod NCS = Natural Colour System LRV = Light Reflectance Value  
▲ = These colours contain a tonal chipped decoration

